



# SINKS

## FLOOR MOP SINKS

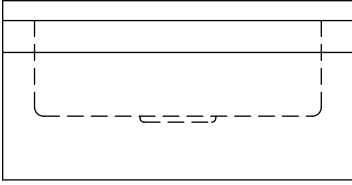


Item #:

Qty #:

Model #:

Project #:



### SINK FEATURES:

Fully fabricated bowl for the full metal thickness throughout the bowl and greater durability than a drawn sink.

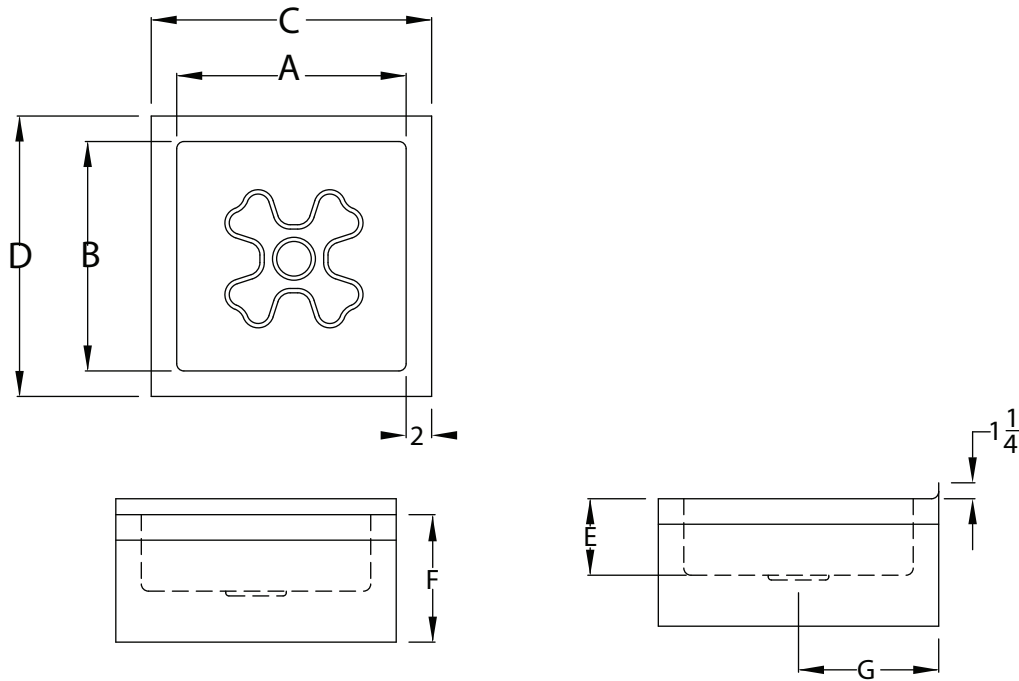
All corners are covered at 5/8" radius, welded and polished to form a one-piece sanitary unit.

All sinks are furnished with basket drains.

16 gauge type 304 stainless steel, 6" bowl depth and 12" bowl depth.

BOWL SIZE	MODEL	WT.
18 X 18 X 6	RJ-FS-1818-6	25
20 X 20 X 6	RJ-FS-2020-6	45
24 X 24 X 6	RJ-FS-2424-6	58
28 X 20 X 6	RJ-FS-2820-6	63
18 X 18 X 12	RJ-FS-1818-12	35
20 X 20 X 12	RJ-FS-2020-12	55
24 X 24 X 12	RJ-FS-2424-12	63
28 X 20 X 12	RJ-FS-2820-12	65

# DIMENSIONS & SPECIFICATIONS



DIMENSIONS ARE TYPICAL (TOL. +/- 1/2")

MODEL	A	B	C	D	E	F	G
RJ-FS-1818-6	18	18	22	22	6	10	11
RJ-FS-2020-6	20	20	24	24	6	10	12
RJ-FS-2424-6	24	24	28	28	6	10	14
RJ-FS-2820-6	28	20	32	24	6	10	12
RJ-FS-1818-12	18	18	22	22	12	16	11
RJ-FS-2020-12	20	20	24	24	12	16	12
RJ-FS-2424-12	24	24	28	28	12	16	14
RJ-FS-2820-12	28	20	32	24	12	16	12